

ERSATZTEILBILD UNTERPUMPE Graco Mark10

Parts - Pump 16X426, 16X427

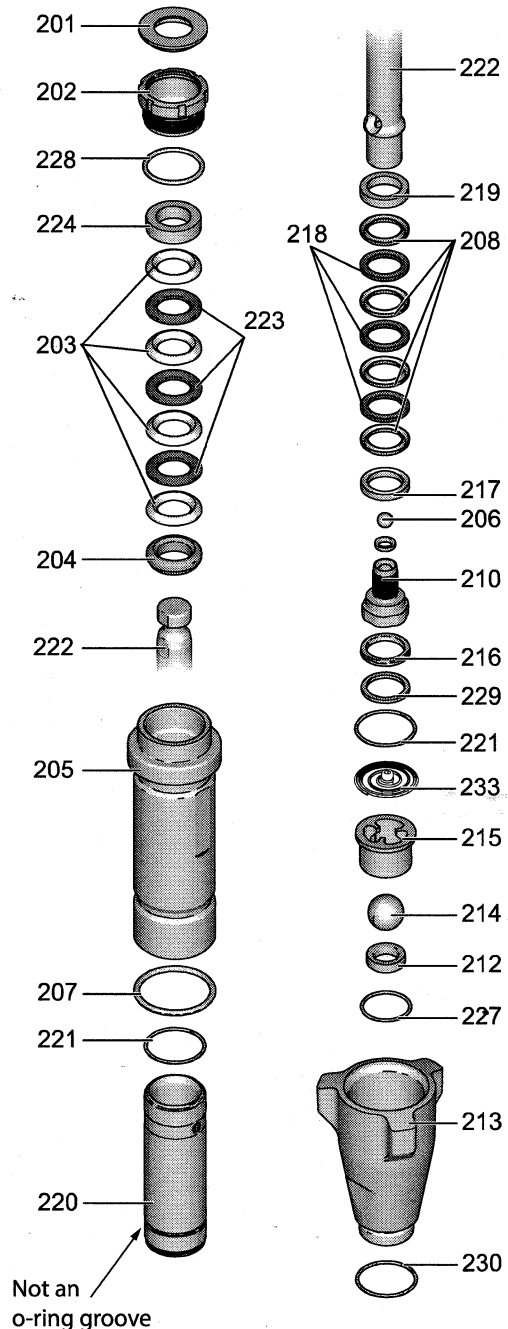
Parts - Pump 16X426, 16X427

Ref.	Description	Qty.
201*†*	SEAL, throat	1
202	NUT, packing	1
203*†*	V-PACKING, throat, V-Max, UHMWPE, blue	4
204*†*	GLAND, male, throat	1
205	CYLINDER, pump Model 16X426 Model 16X427	1
206	BALL, check Model 16X426 (Stainless steel) Model 16X427 (Ceramic)	1
207*†*	PACKING, o-ring	1
208*†*	V-PACKING, piston, V-MAX, UHMWPE, blue	4
210	VALVE, piston	1
212	KIT, seat, carbide Model 16X426 includes 214, 227 (stain- less steel check ball) Model 16X426 includes 214, 227, 231 (ceramic check ball) Model 16X427 includes 214, 227, 231	1
213	VALVE, intake (foot) Model 16X426 Model 16X427	1
214	BALL, check, inlet Model 16X426 (Stainless steel) Model 16X427 (Ceramic)	1
215	GUIDE, ball Model 16X426 Model 16X427	1
216*†*	WIPER, piston	1
217*†*	GLAND, female, piston	1
218	V-PACKING, leather, piston 16X426 16X427	3
219*†*	GLAND, male, piston	1
220	SLEEVE, cylinder	1
221*†*	O-RING, ptfe	2
222	ROD, piston Model 16X426 Model 16X427	1
223*†*	V-PACKING, leather, throat	3
224*†*	GLAND, female, throat	1
227*†*	O-RING, ptfe	1
228*†*	O-RING	1
229*†*	WASHER, backup	1
230	O-RING, fluoroelastomer (Model 16X426 only)	1
233	SPRING, intake, ball Model 16X426 Model 16X427	1

* These parts are also included in Repair Kit 249123, which may be purchased separately.

† These parts are also included in Repair Kit 16X431, which may be purchased separately.

* These parts are also included in Repair Kit 17A578, which may be purchased separately.



ti23507b

332922B

HALLER
Oberflächentechnik GmbH
Verkauf / Vermietung
und Service von Geräten
und Spezialmaschinen
Tel. 030-8610832
Heusingerstrasse 18
12107 BERLIN