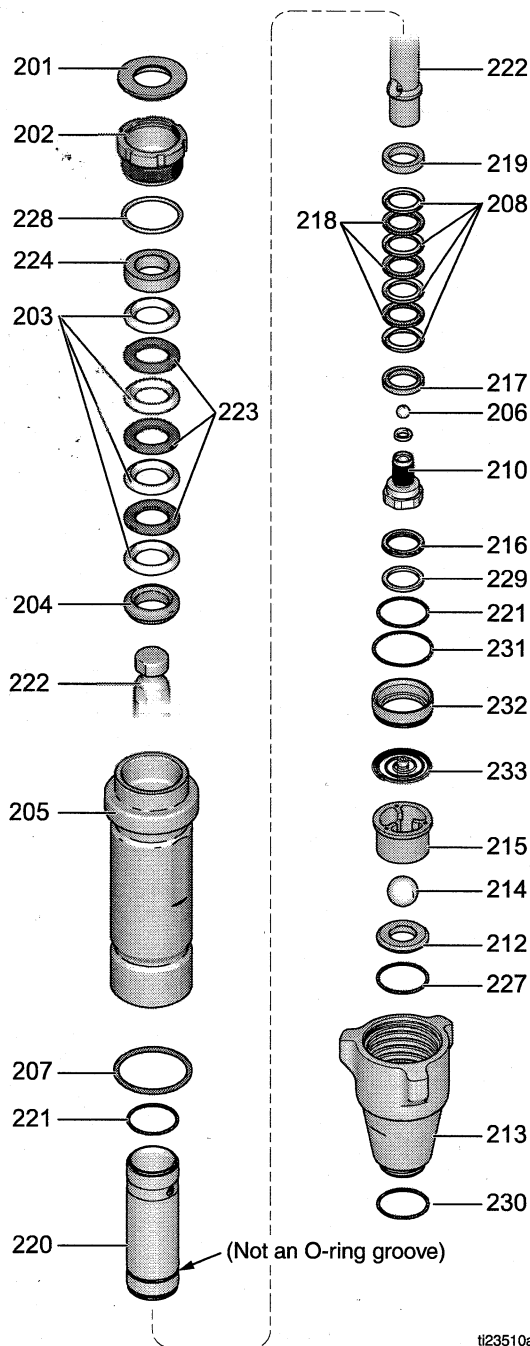


# ERSATZTEILBILD UNTERPUMPE Graco Mark7

Parts - Pump 16X419, 16X420, 16X421, 16Y599, 16Y602

## Parts - Pump 16X419, 16X420, 16X421, 16Y599, 16Y602

Ref.	Description	Qty.
201*†	SEAL, throat	1
202	NUT, packing	1
203*†*	V-PACKING, throat, V-Max, UHMWPE, blue	4
204*†*	GLAND, male, throat	1
205	CYLINDER, pump Model 16X419 Model 16X420 Model 16X421 Model 16Y599 Model 16Y602	1
206	BALL, check Model 16X419, 16X420 (Stainless steel) Model 16X421, 16Y599, 16Y602 (Ceramic)	1
207	PACKING, o-ring Model 16X419, 16X420, 16X421, 16Y599 Model 16Y602	1
208*†*	V-PACKING, piston, V-MAX, UHMWPE, blue	4
210	VALVE, piston	1
212	KIT, seat, carbide Model 16X419, 16X420 includes 214, 227 Model 16X421, 16Y599 includes 214, 227 Model 16Y602 includes 214, 227, 233	1
213	VALVE, intake (foot) Model 16X419, 16X420 Model 16X421, 16Y599 Model 16Y602	1
214	BALL, check, inlet Model 16X419, 16X420 (Stainless steel) Model 16X421, 16Y599 (Ceramic) Model 16Y602 (Ceramic) Model 16Y602 (Stainless steel)	1
215	GUIDE, ball Model 16X419, 16X420 Model 16X421, 16Y599 Model 16Y602	1
216*†*	WIPER, piston	1
217*†*	GLAND, female, piston	1
218*†*	V-PACKING, leather, piston	3
219*†*	GLAND, male, piston	1
220	SLEEVE, cylinder Model 16X419, 16X421, 16Y602 Model 16X420, 16Y599	1
221*†*	O-RING, ptfe	2
222	ROD, piston Model 16X419 Model 16X420 Model 16X421, 16Y599, 16Y602	1
223*†*	V-PACKING, leather, throat	3
224*†*	GLAND, female, throat	1
227	O-RING, ptfe Model 16X419, 16X420, 16X421, 16Y599 Model 16Y602	1
228*†	O-RING	1
229*†*	WASHER, backup	1
230*	O-RING, fluoroelastomer (Model 16X419, 16X420 only)	1
231*	O-RING (Model 16Y602 only)	1
232*	SPACER, sleeve (Model 16Y602 only)	1
233	SPRING, intake, ball (Model 16Y602 only)	1



\* These parts are also included in Repair Kit 248213, which may be purchased separately.

† These parts are also included in Repair Kit 249189, which may be purchased separately.

\* These parts are also included in Repair Kit 24M830, which may be purchased separately.